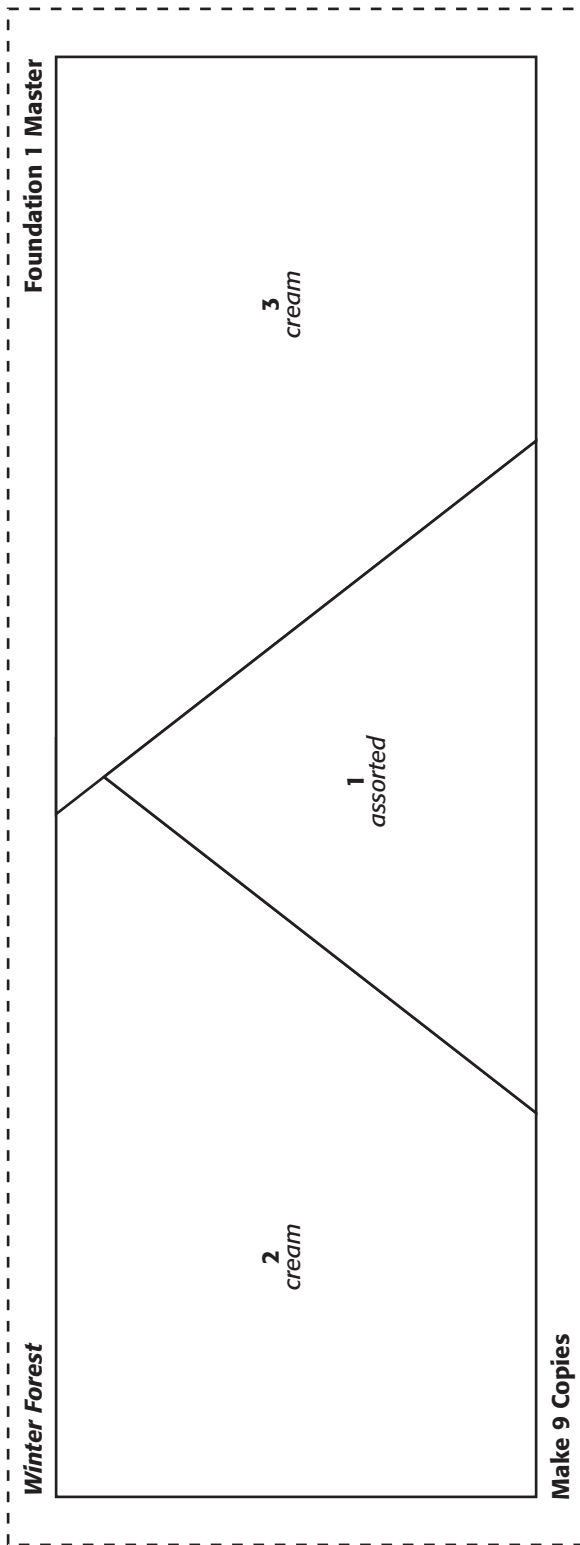
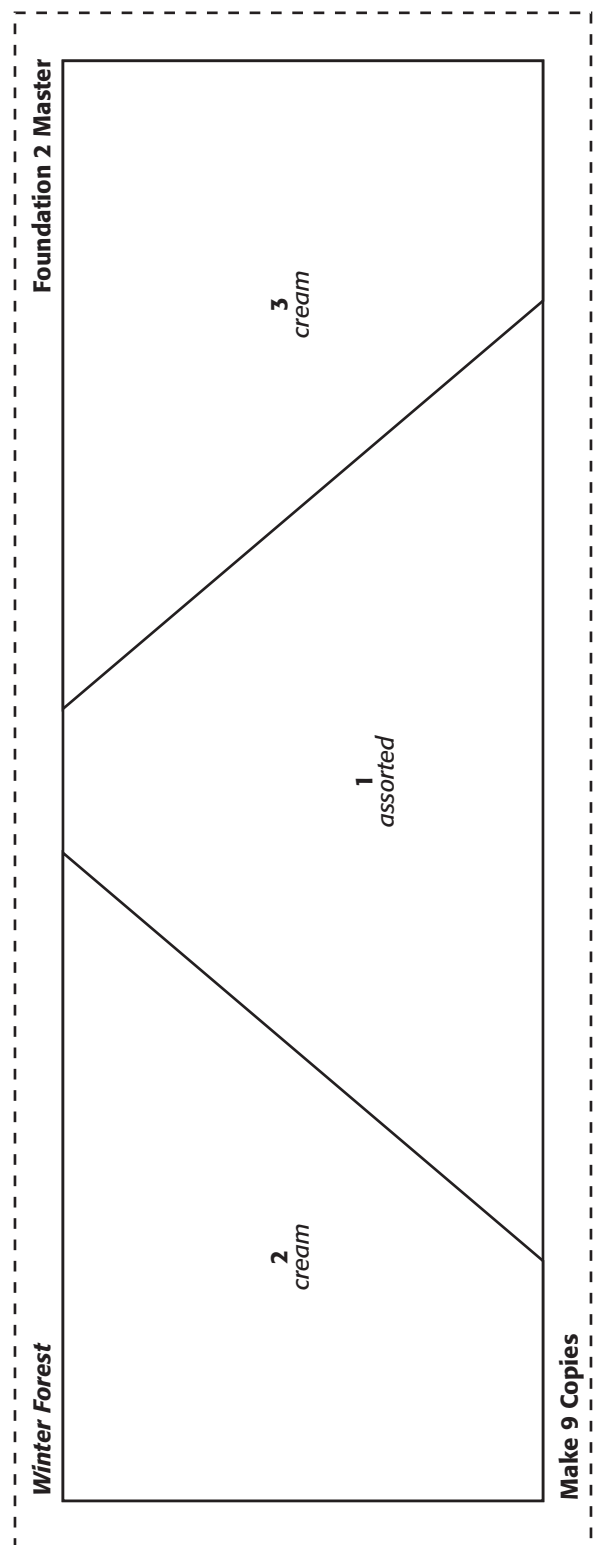


# WINTER FOREST

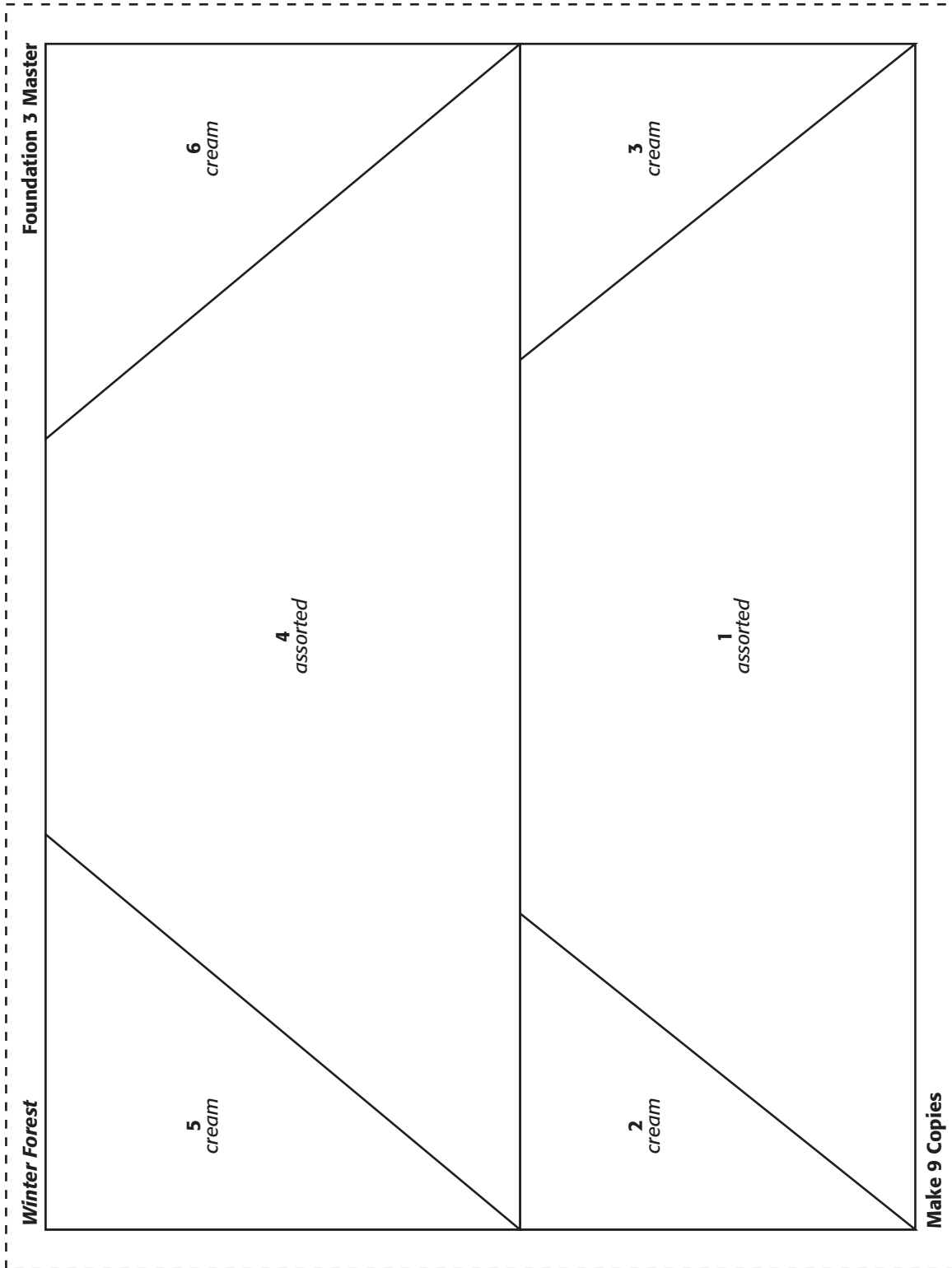


Foundation is the reverse of the finished unit.



Print at 100% (no scaling). This box measures 2 inches wide by 1 inch high. Use this as an accuracy guide when printing the templates.

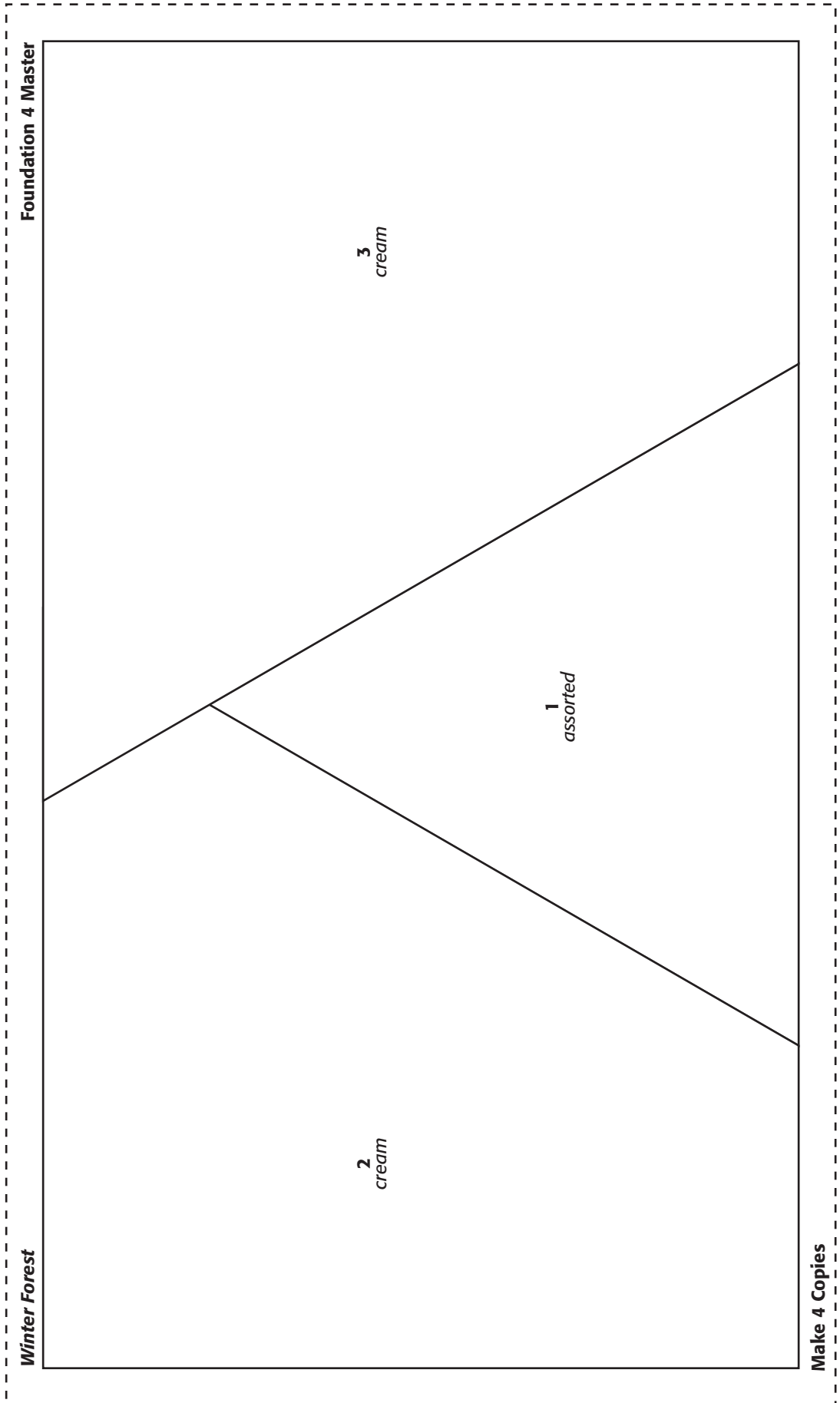
# WINTER FOREST



Print at 100% (no scaling). This box measures 2 inches wide by 1 inch high. Use this as an accuracy guide when printing the templates.

# WINTER FOREST

Print at 100% (no scaling). This box measures 2 inches wide by 1 inch high. Use this as an accuracy guide when printing the templates.

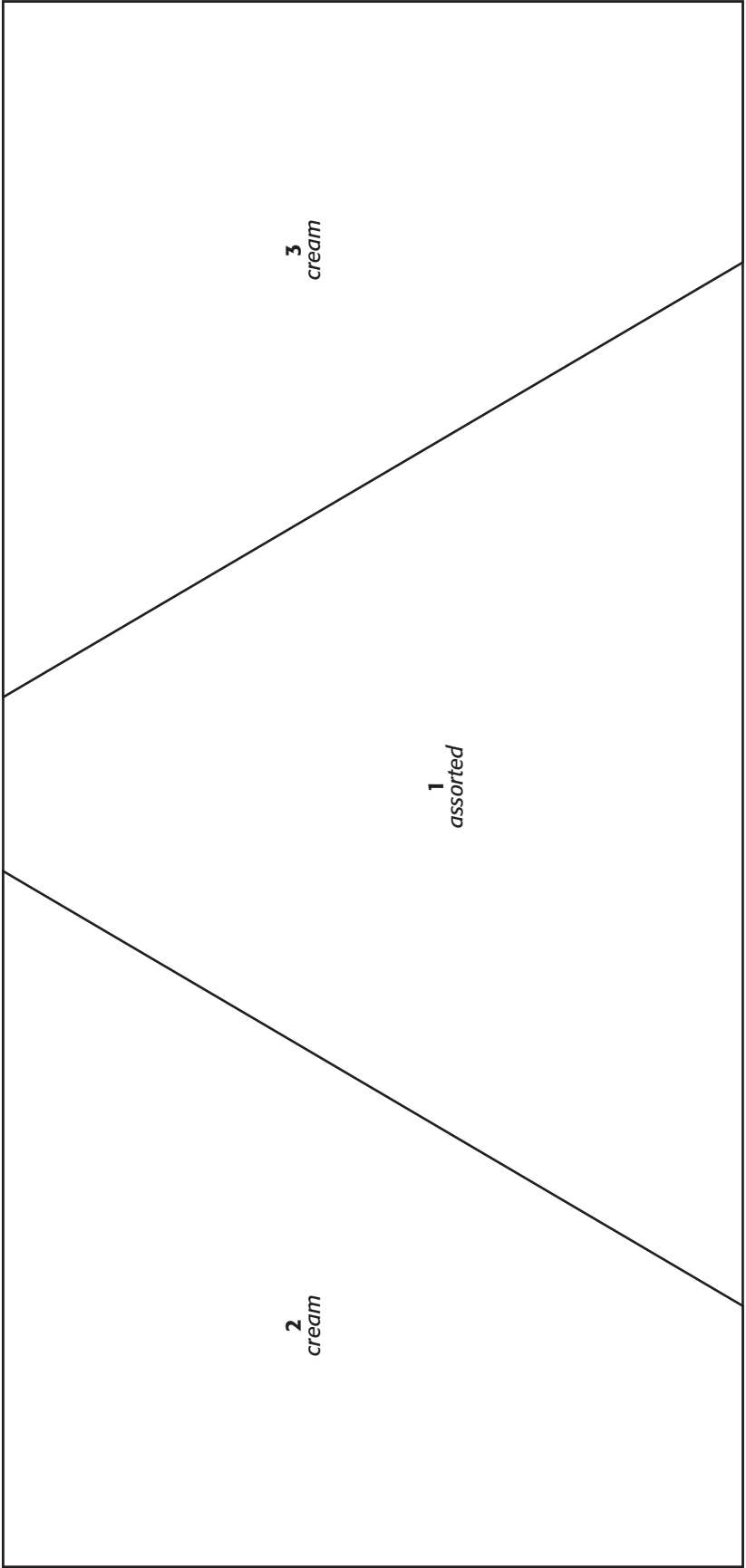


# WINTER FOREST

Print at 100% (no scaling). This box measures 2 inches wide by 1 inch high. Use this as an accuracy guide when printing the templates.

*Winter Forest*

**Foundation 5 Master**



**Make 4 Copies**

Foundation 6 Master

Winter Forest

6  
cream

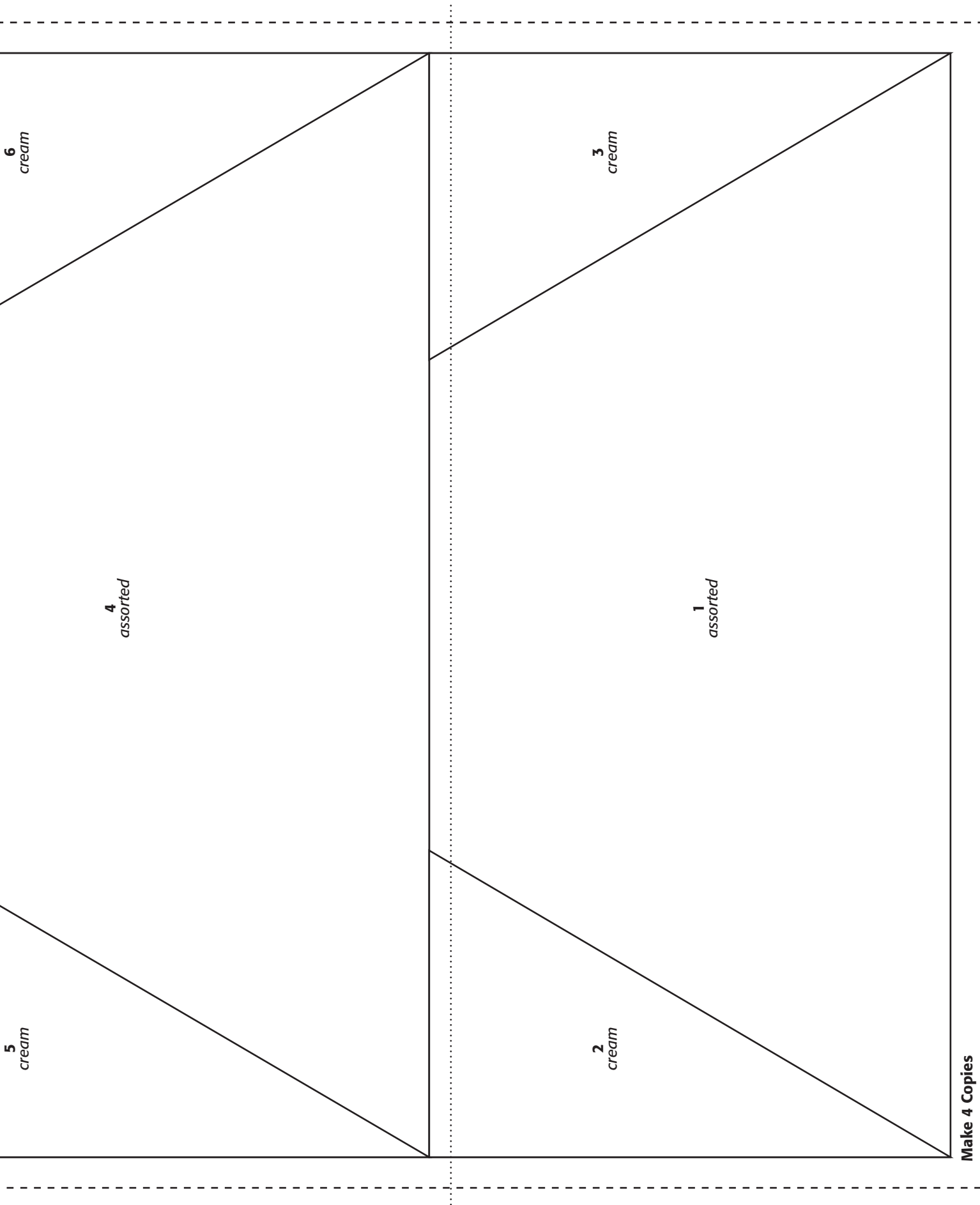
3  
cream

4  
assorted

1  
assorted

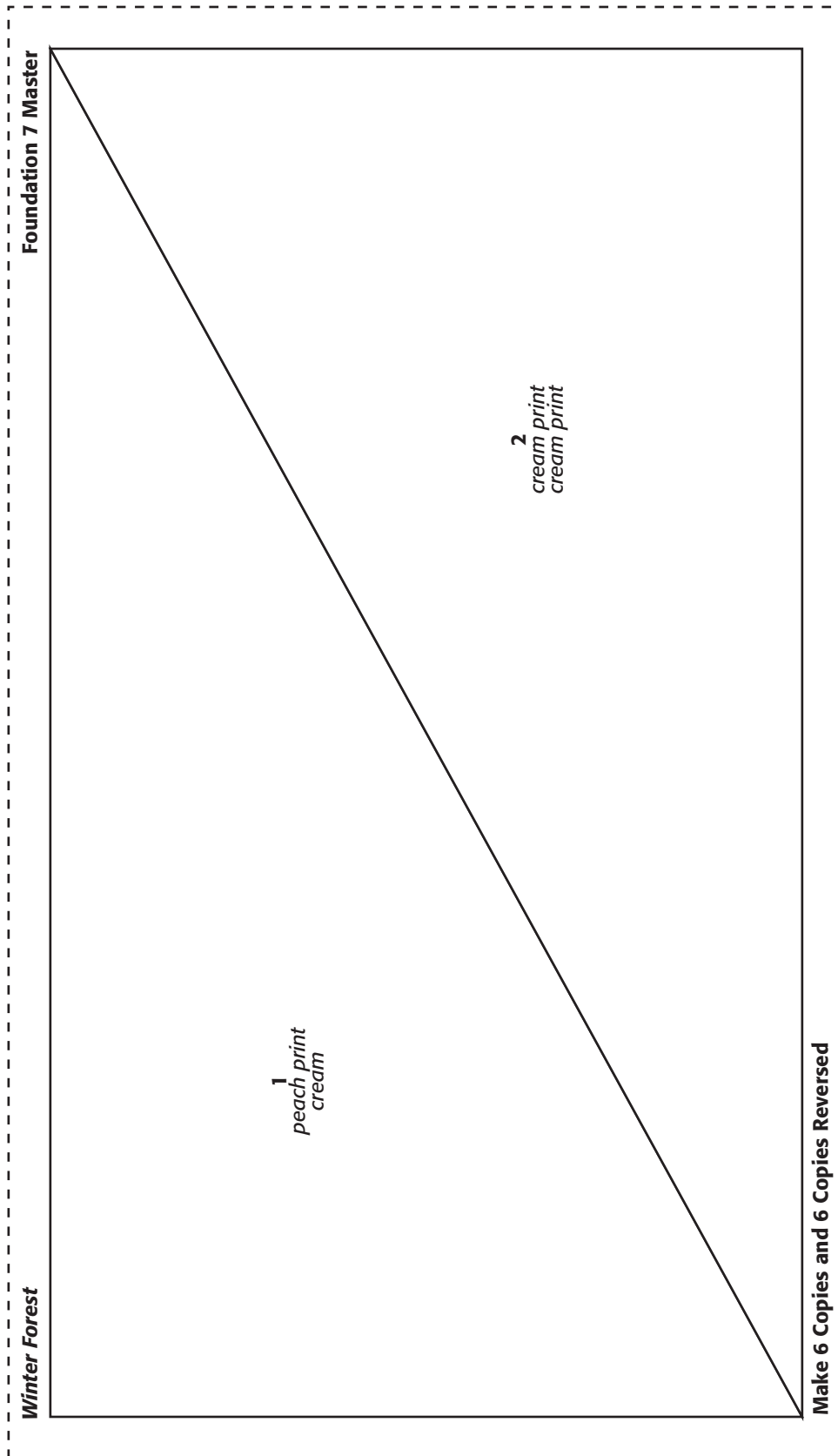
5  
cream

2  
cream



Make 4 Copies

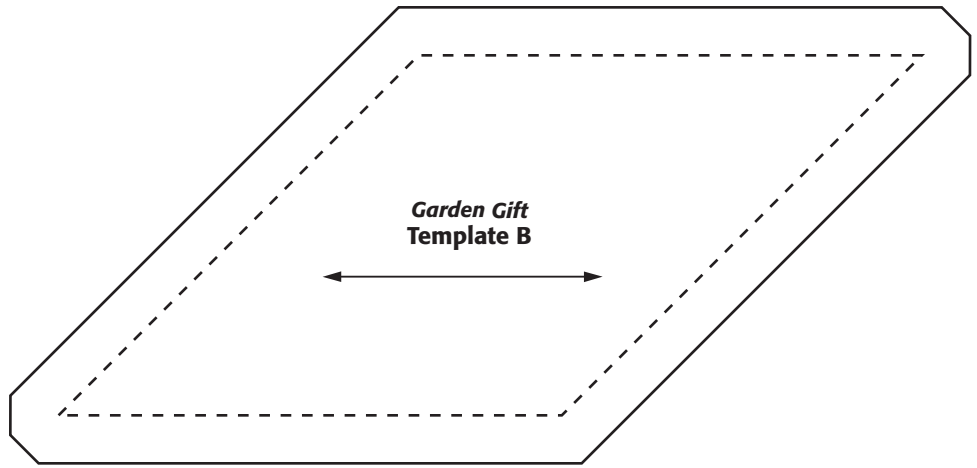
# WINTER FOREST



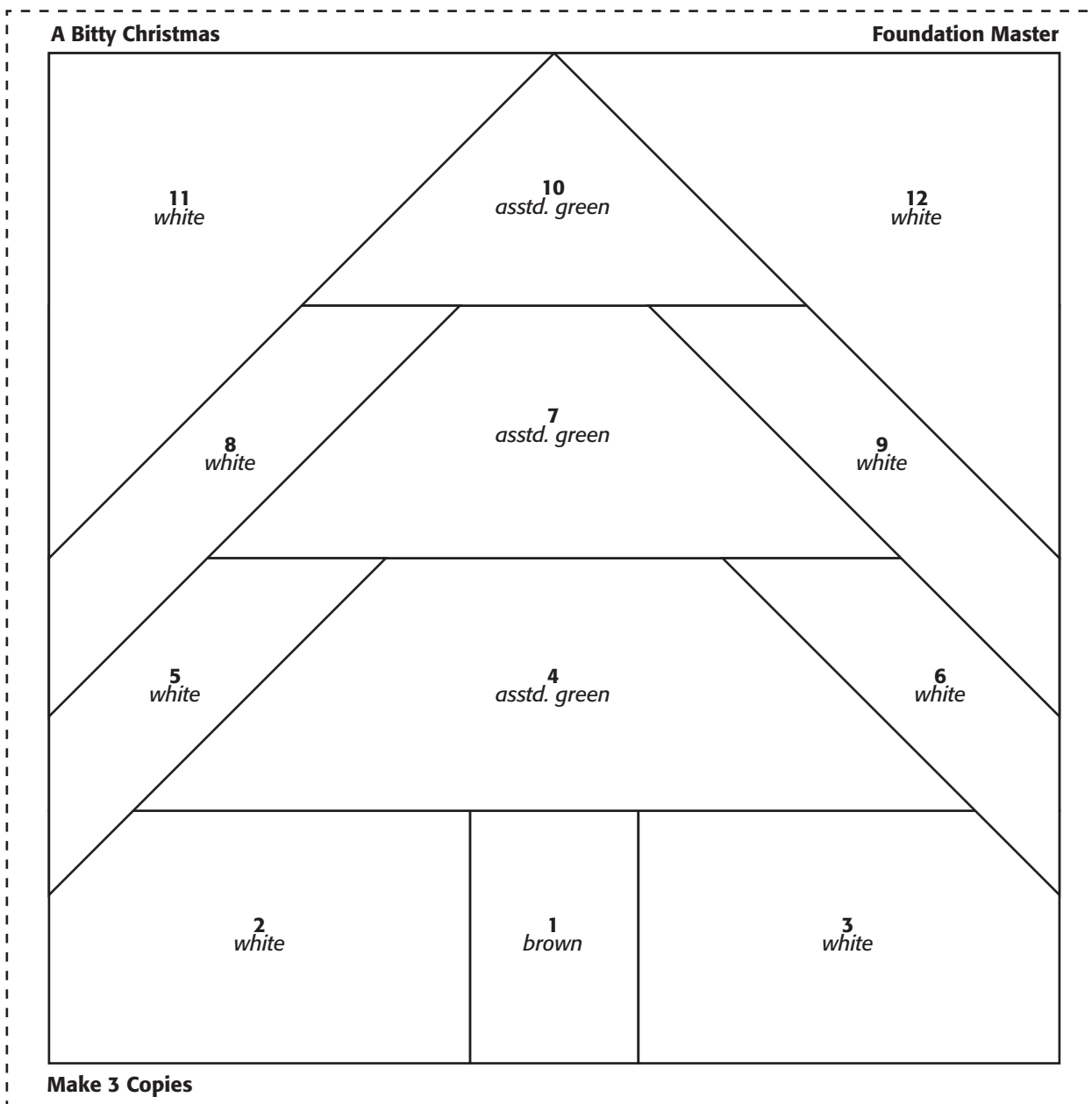
Print at 100% (no scaling). This box measures 2 inches wide by 1 inch high. Use this as an accuracy guide when printing the templates.

# GARDEN GIFT

Print at 100% (no scaling). This box measures 2 inches wide by 1 inch high. Use this as an accuracy guide when printing the templates.



# A BITTY CHRISTMAS

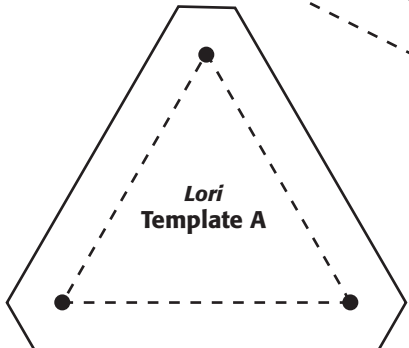
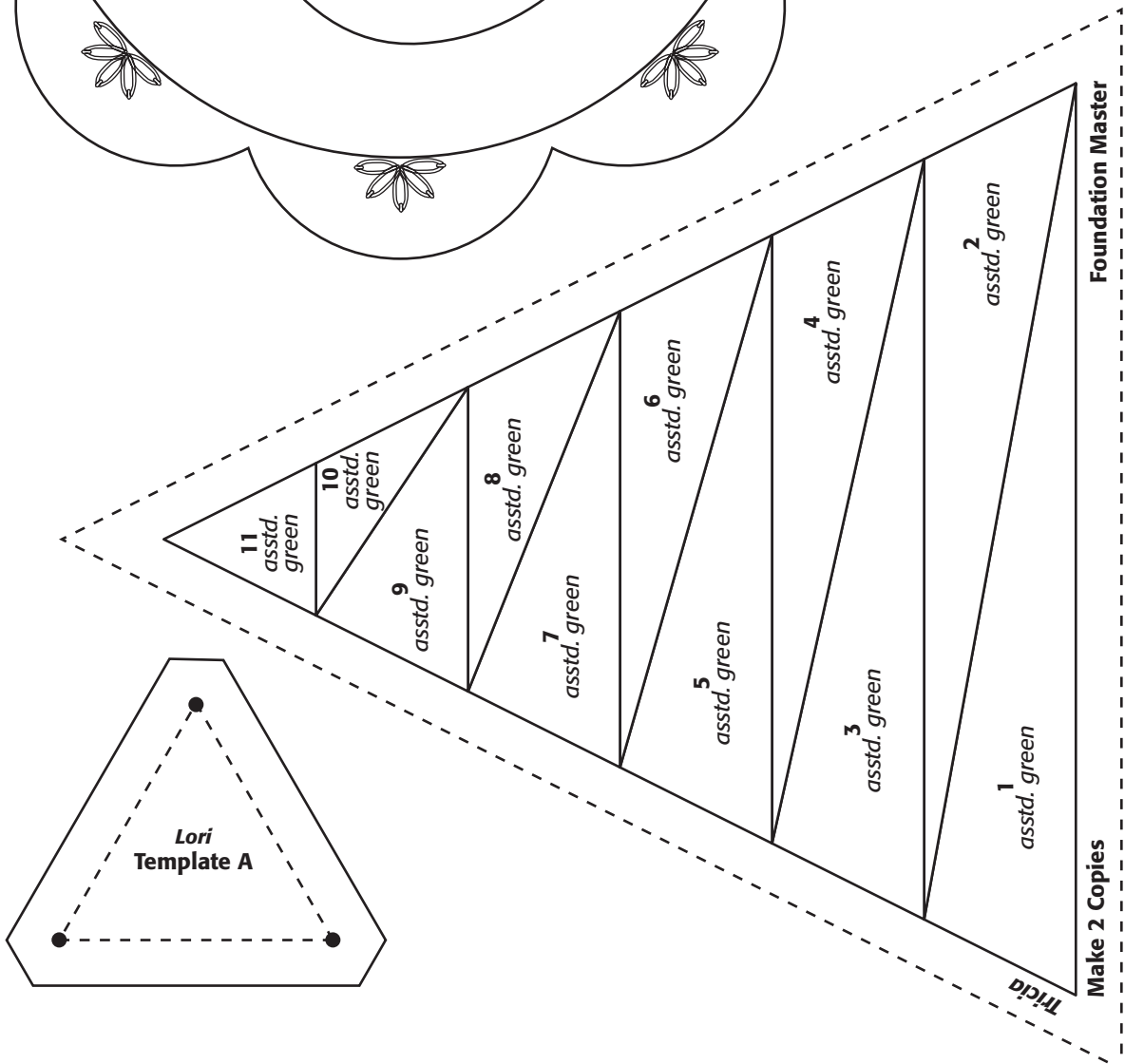
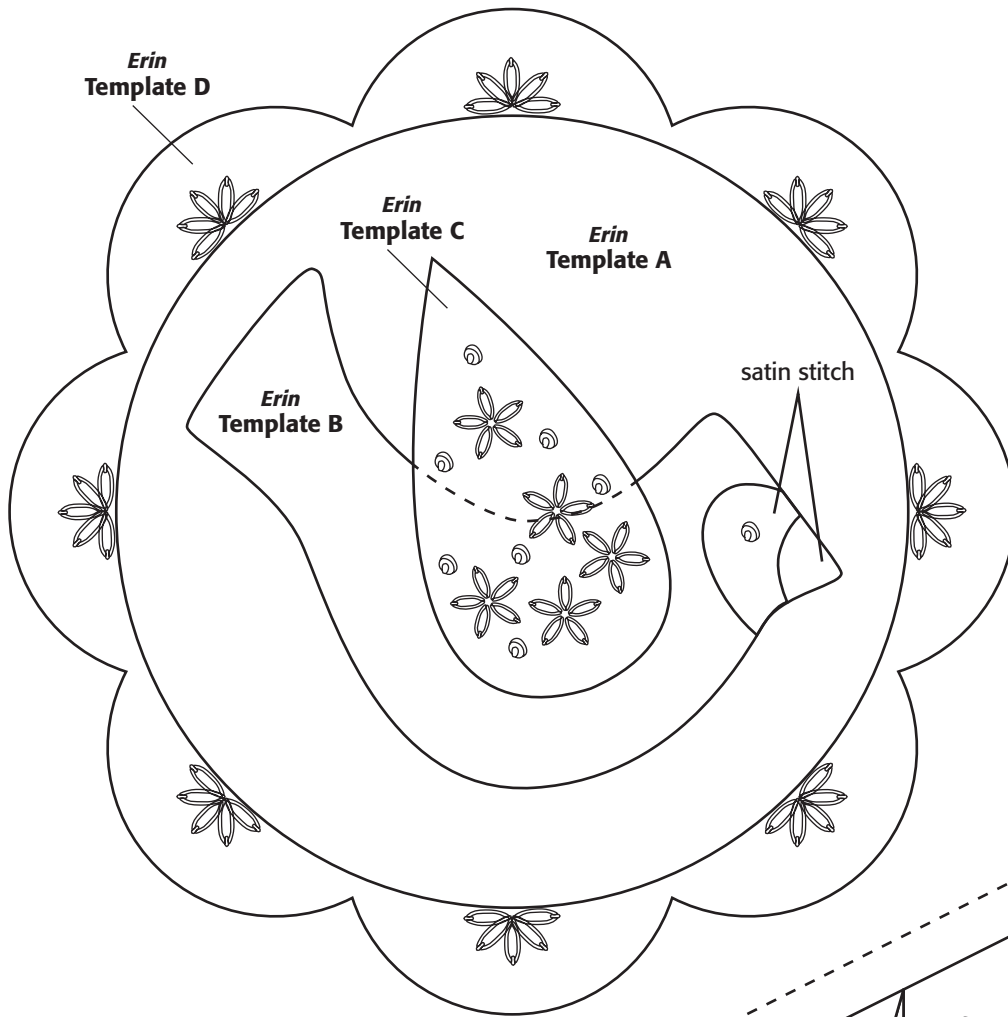


Foundation is the reverse of the finished unit.



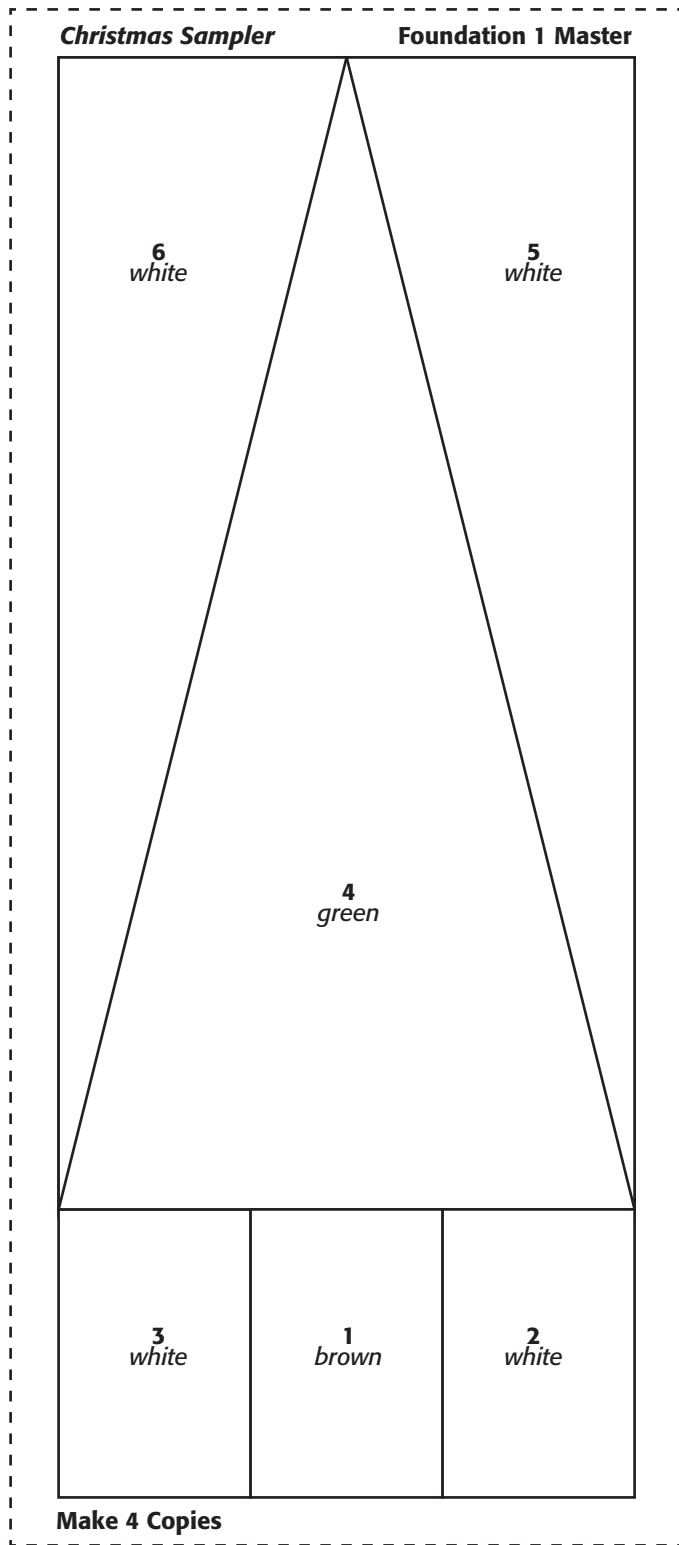
# ORNAMENT EXCHANGE

Print at 100% (no scaling). This box measures 2 inches wide by 1 inch high. Use this as an accuracy guide when printing the templates.

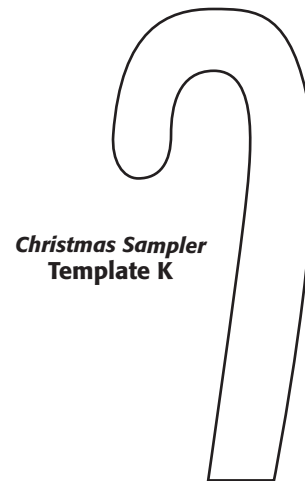
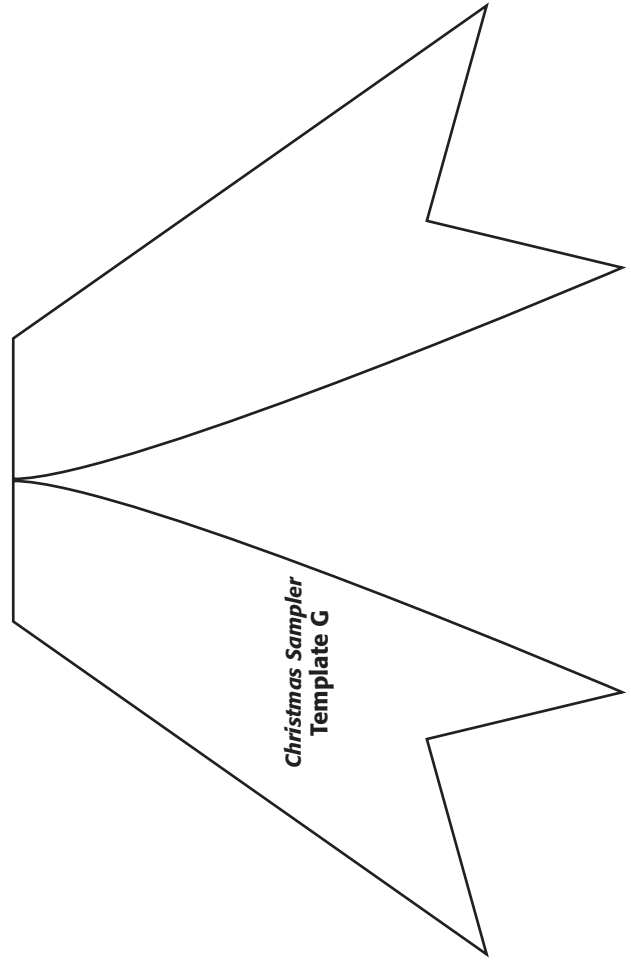


Foundation is the reverse of the finished unit.

# CHRISTMAS SAMPLER

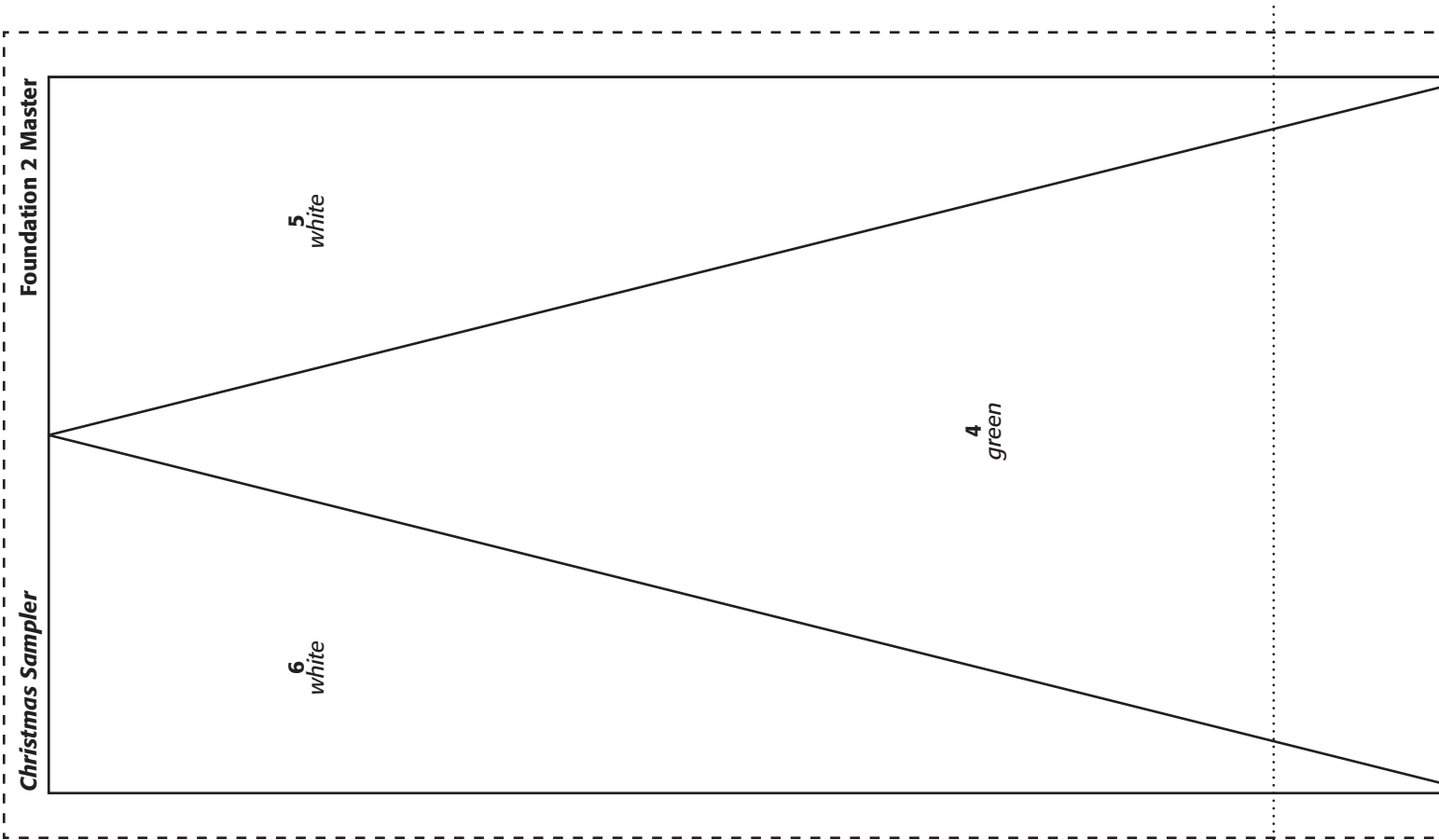


**Foundation is the reverse of the finished unit.**

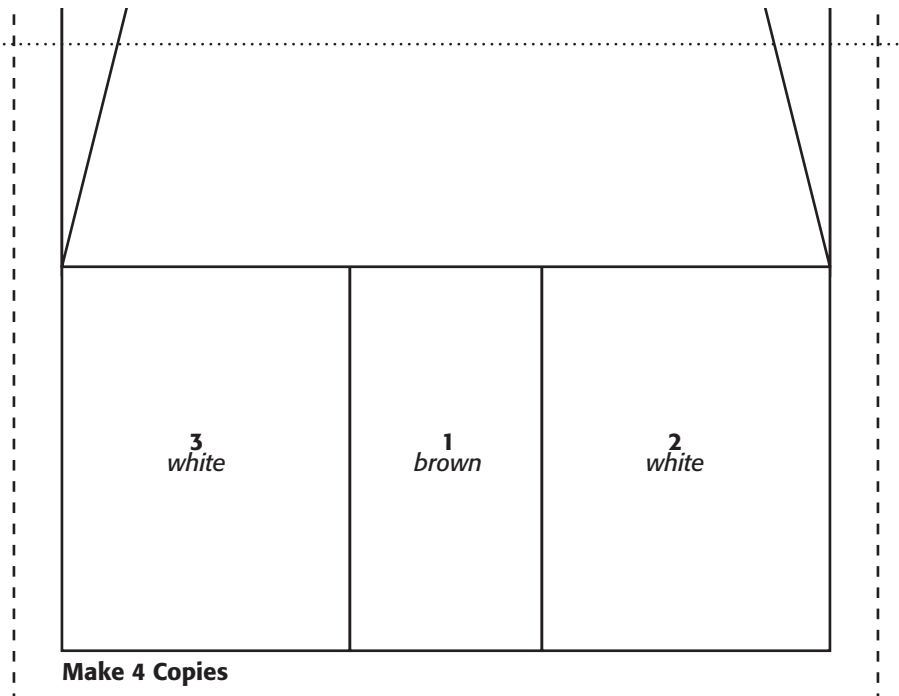


Print at 100% (no scaling). This box measures 2 inches wide by 1 inch high. Use this as an accuracy guide when printing the templates.

# CHRISTMAS SAMPLER



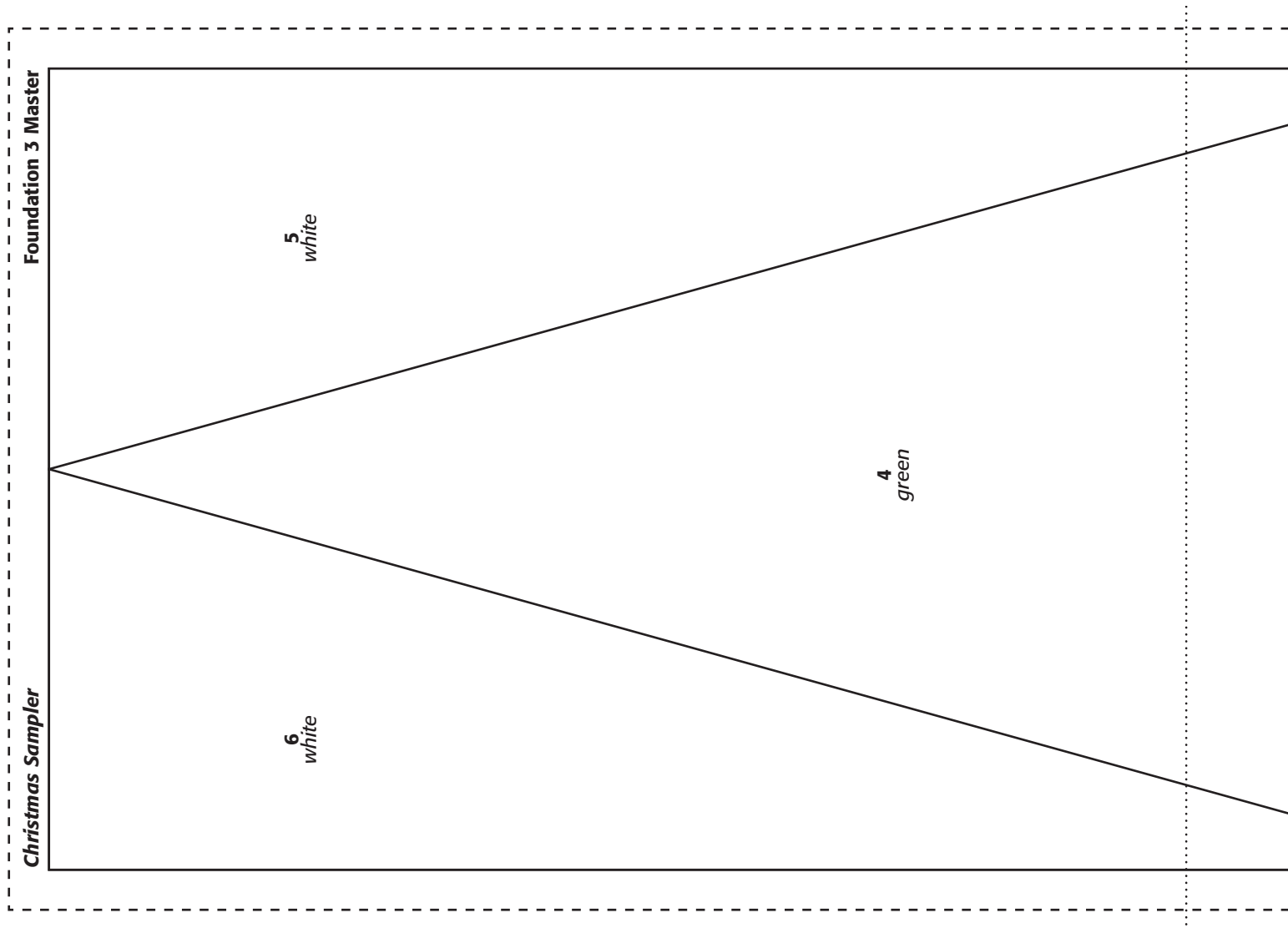
Foundation is the reverse of the finished unit.



Make 4 Copies

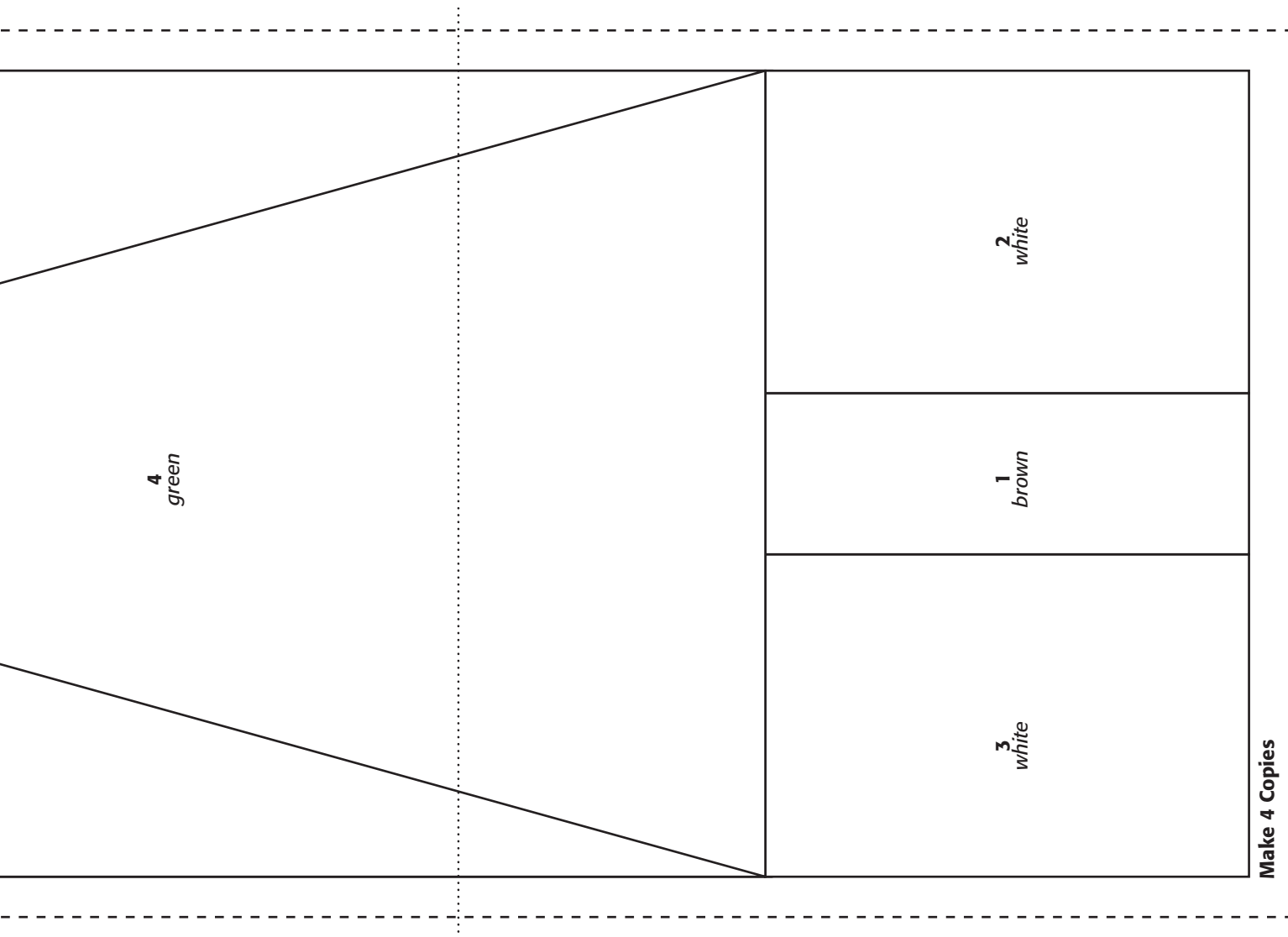
Print at 100% (no scaling). This box measures 2 inches wide by 1 inch high. Use this as an accuracy guide when printing the templates.

# CHRISTMAS SAMPLER



Print at 100% (no scaling). This box measures 2 inches wide by 1 inch high. Use this as an accuracy guide when printing the templates.

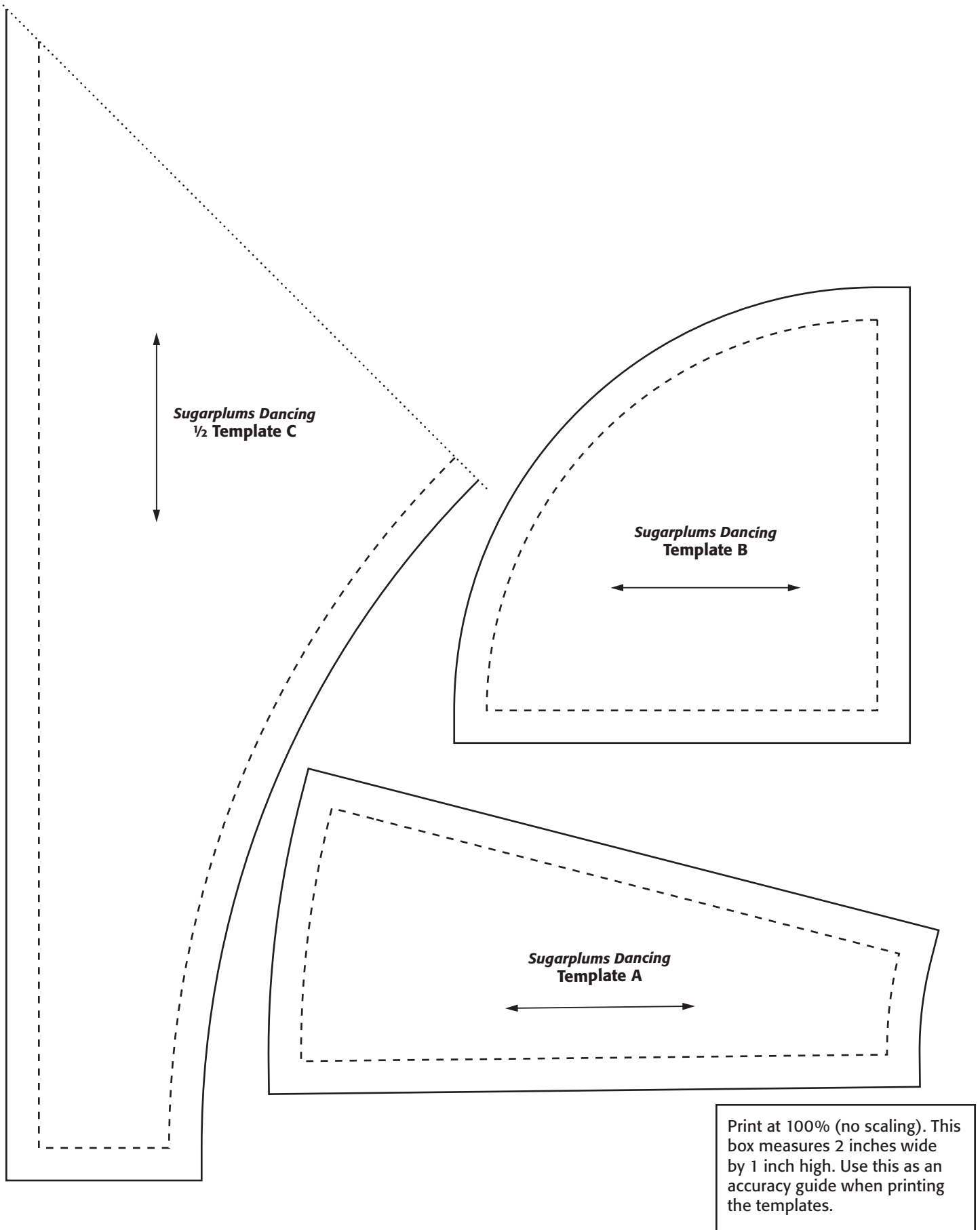
# CHRISTMAS SAMPLER



Make 4 Copies

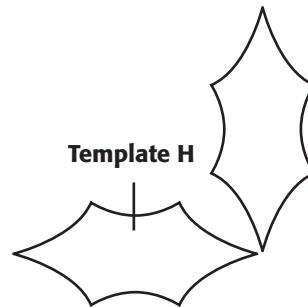
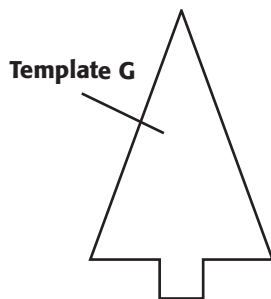
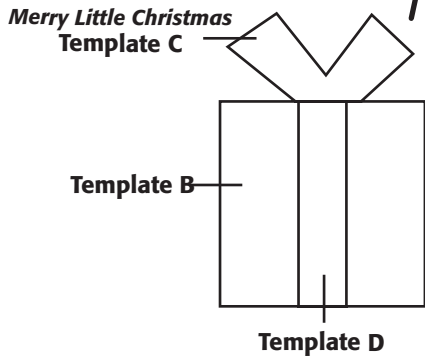
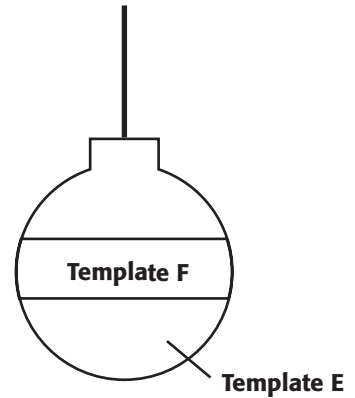
Print at 100% (no scaling). This box measures 2 inches wide by 1 inch high. Use this as an accuracy guide when printing the templates.

# SUGARPLUMS DANCING



# MERRY LITTLE CHRISTMAS

Have  
Yourself a  
Merry Little  
Christmas

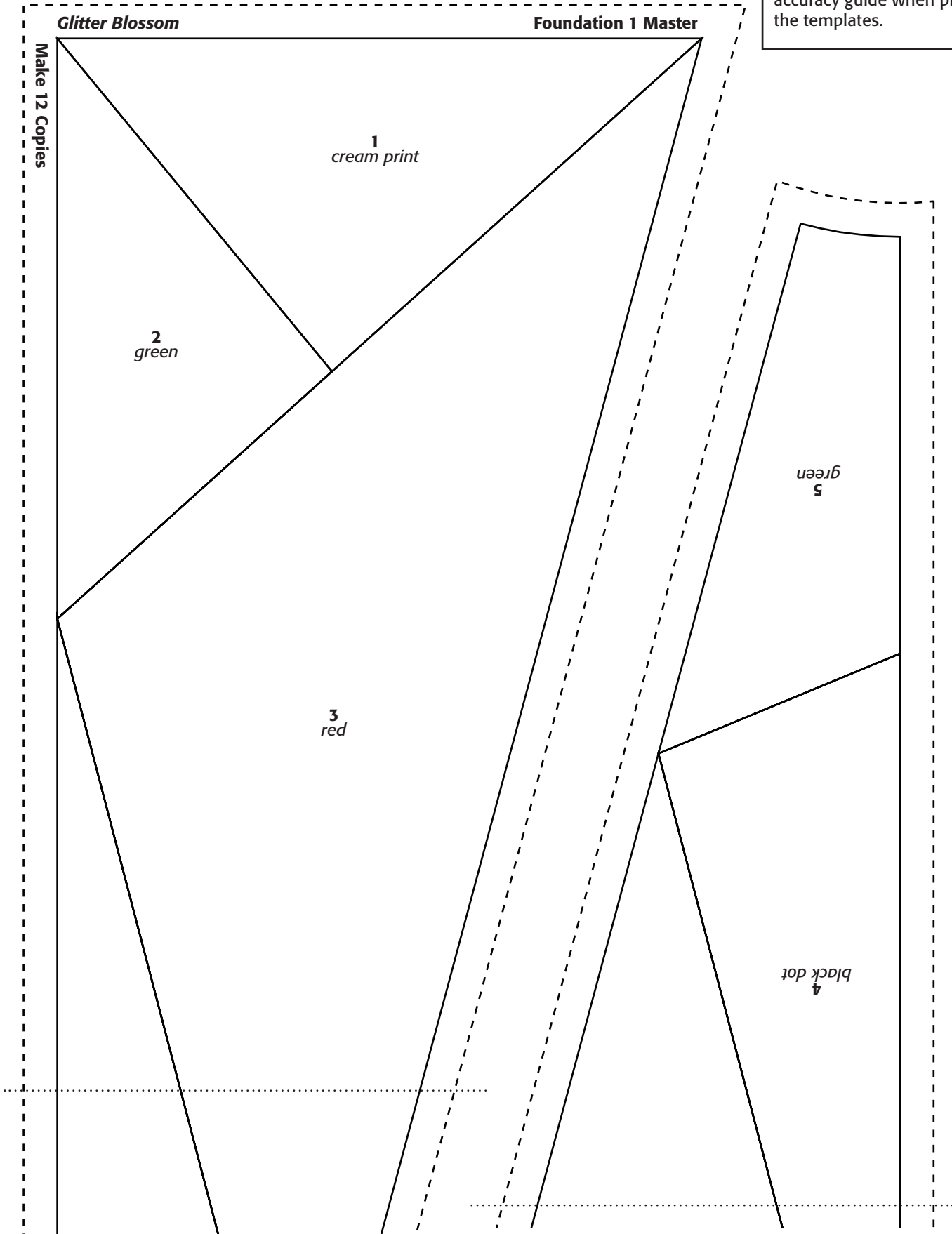


Print at 100% (no scaling). This box measures 2 inches wide by 1 inch high. Use this as an accuracy guide when printing the templates.

# GLITTER BLOSSOM

Foundation is the reverse of the finished unit.

Print at 100% (no scaling). This box measures 2 inches wide by 1 inch high. Use this as an accuracy guide when printing the templates.

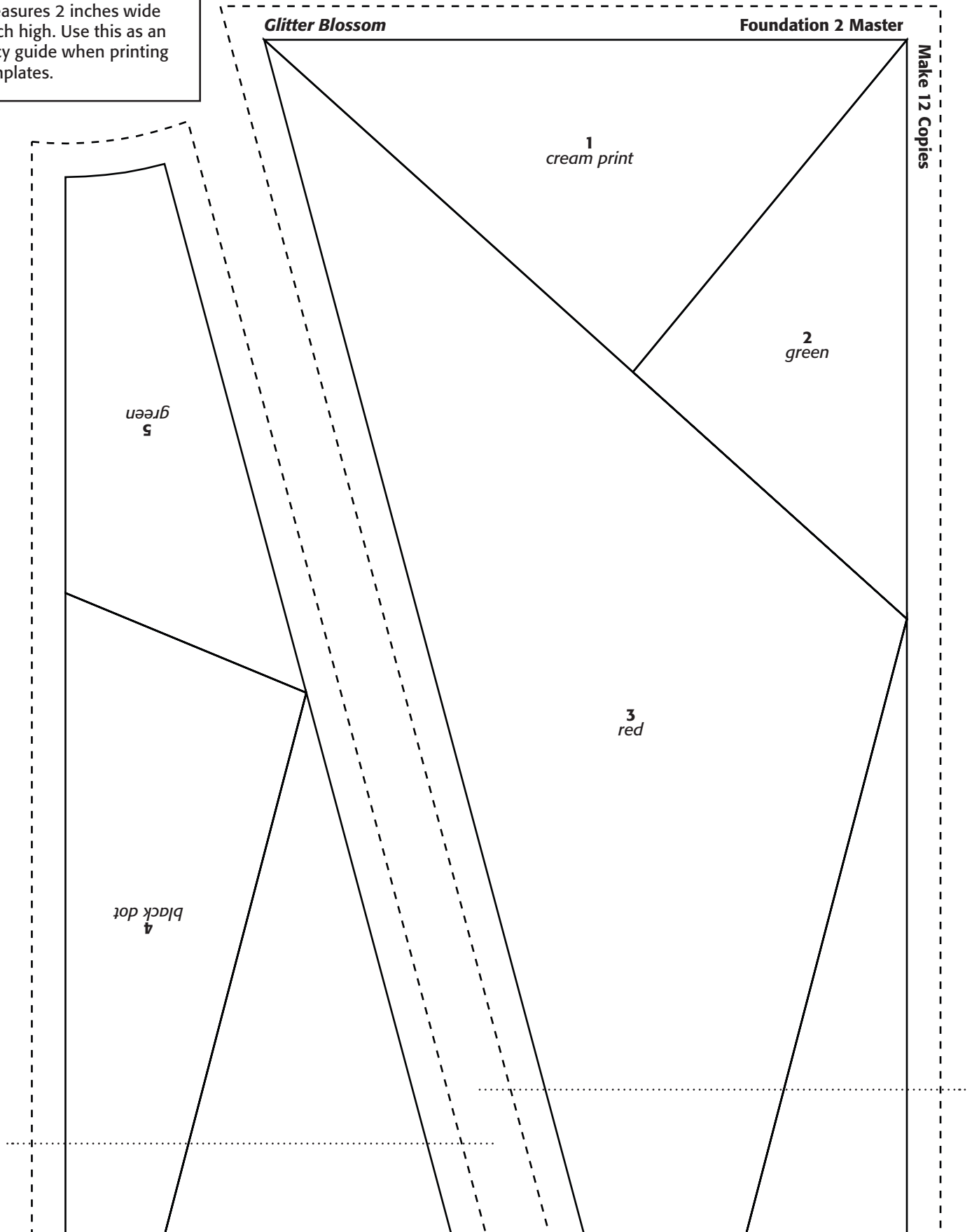




# GLITTER BLOSSOM

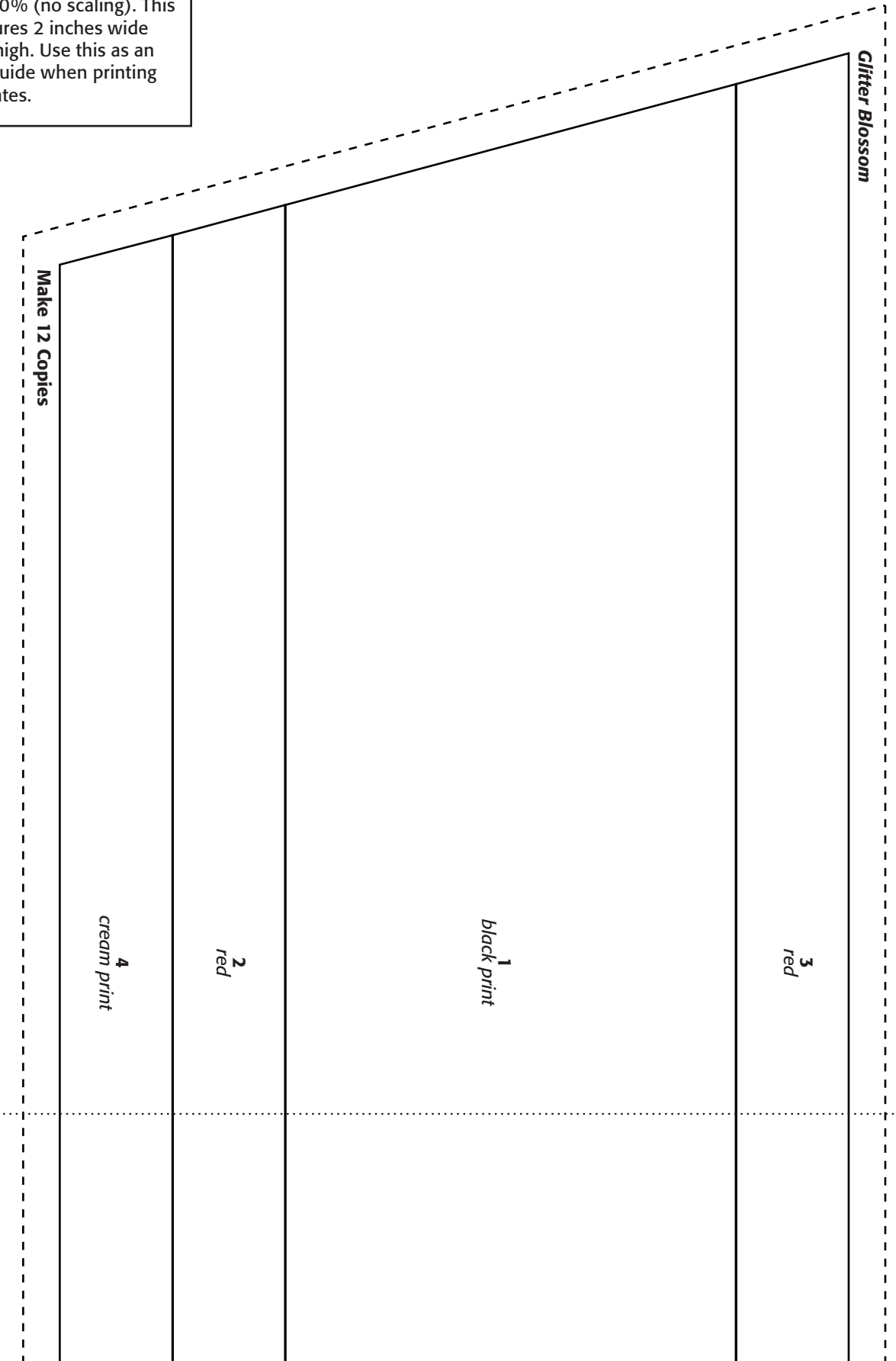
Print at 100% (no scaling). This box measures 2 inches wide by 1 inch high. Use this as an accuracy guide when printing the templates.

Foundation is the reverse of the finished unit.

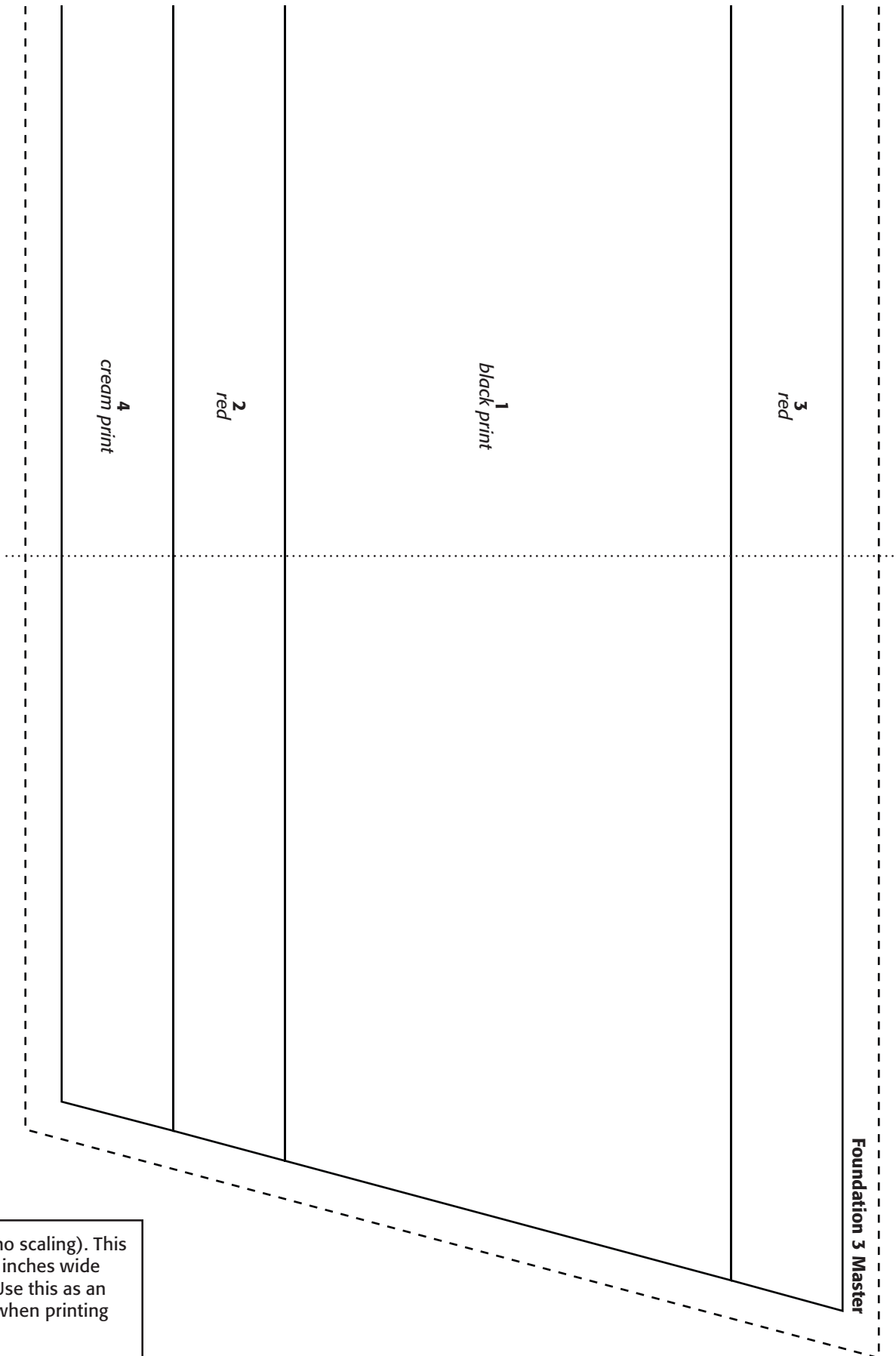


# GLITTER BLOSSOM

Print at 100% (no scaling). This box measures 2 inches wide by 1 inch high. Use this as an accuracy guide when printing the templates.

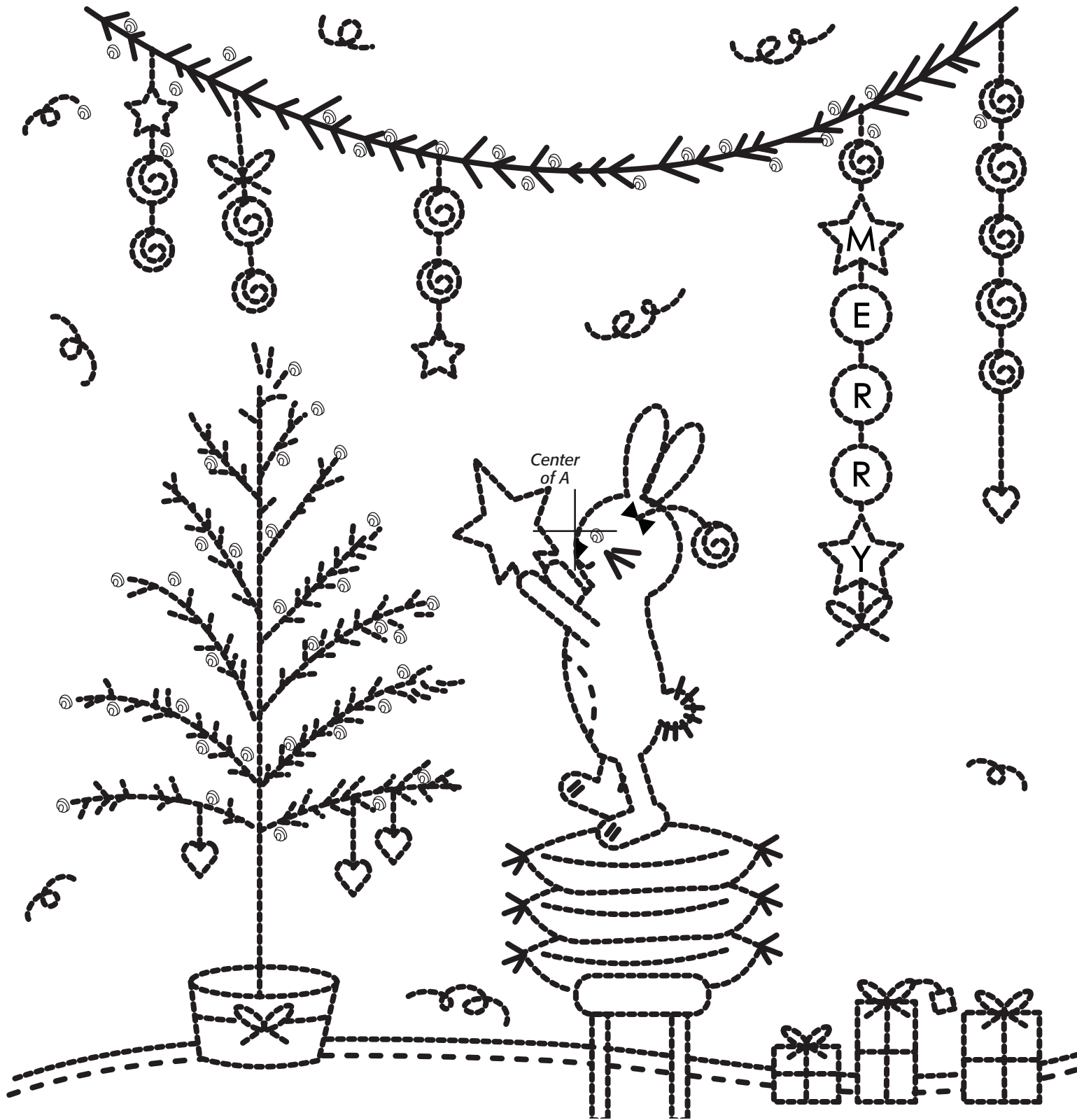


# GLITTER BLOSSOM



Print at 100% (no scaling). This box measures 2 inches wide by 1 inch high. Use this as an accuracy guide when printing the templates.

# HOPPY HOLIDAYS



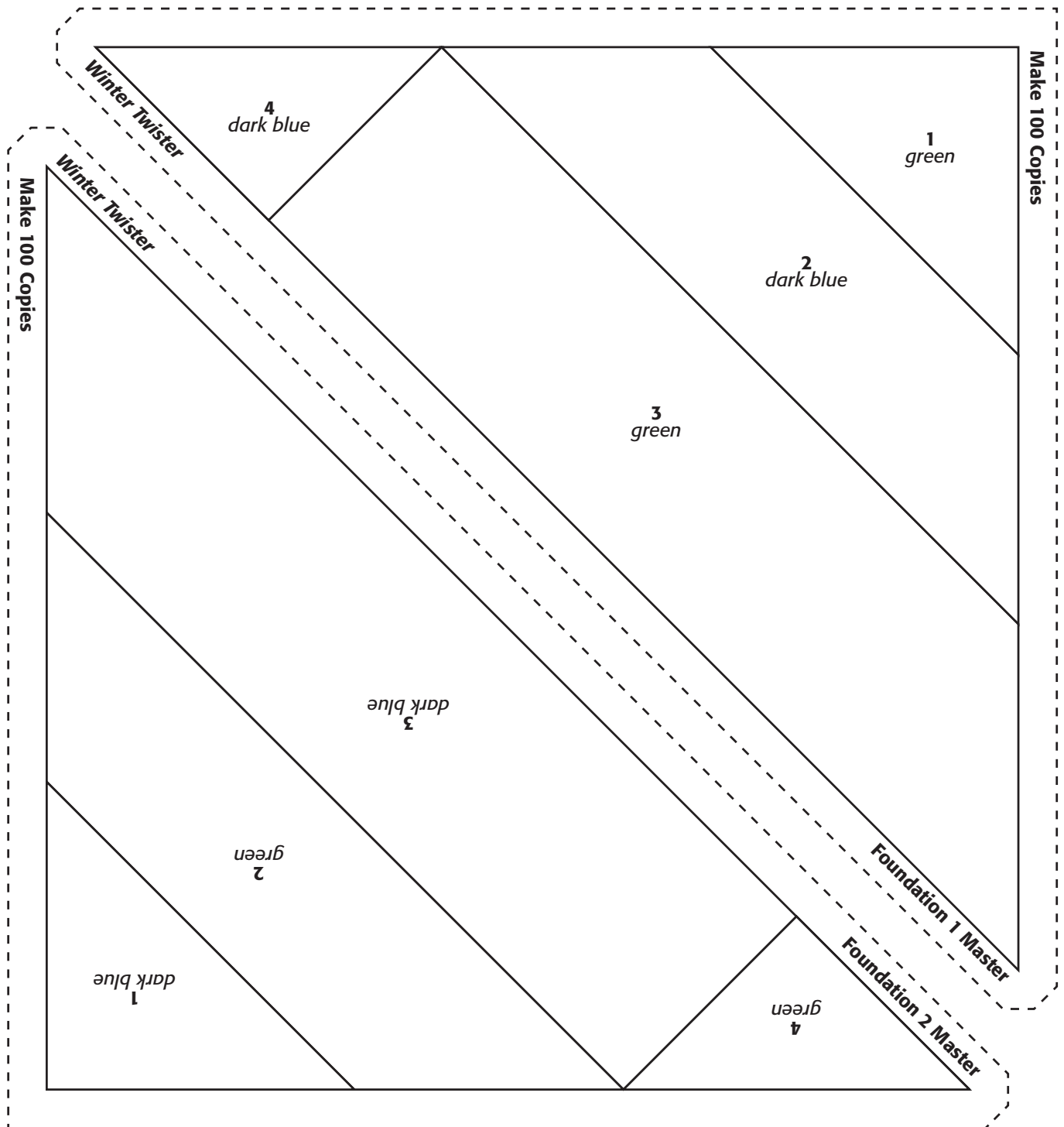
Print at 100% (no scaling). This box measures 2 inches wide by 1 inch high. Use this as an accuracy guide when printing the templates.

# HOPPY HOLIDAYS



Print at 100% (no scaling). This box measures 2 inches wide by 1 inch high. Use this as an accuracy guide when printing the templates.

# WINTER TWISTER



Foundation is the reverse of the finished unit.

Print at 100% (no scaling). This box measures 2 inches wide by 1 inch high. Use this as an accuracy guide when printing the templates.